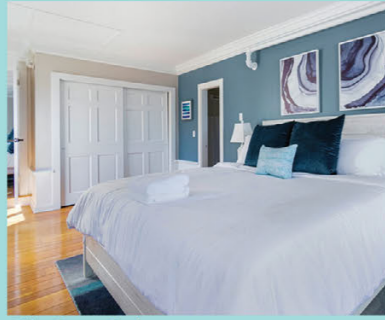


## ACCOMMODATIONS

Known for gracious hospitality, the friendly innkeepers of Rockport offer relaxing accommodations in town and by the sea. Your choices range from quaint New England B&Bs serving guests a delicious breakfast, to historic inns and a modern hotel offering numerous amenities to enhance your stay.



© The Cove at Rockport

## SHOPPING

Stroll through the charming downtown and eclectic Bearskin Neck to explore one-of-a-kind shops. Browse handcrafted jewelry, fashionable clothing, locally made crafts and artisan creations, specialty household items, imported gifts, leather goods, nautical-inspired accessories, souvenirs, books, scrumptious chocolates and so much more.



© Cedar Chest Rockport

© Feather & Wedge

## DINING

Specializing in fresh, delicious local seafood, Rockport offers many casual and fine dining restaurants to satisfy any palate. Enjoy a glass of wine, local craft beer, or cappuccino and a sweet treat while you savor the scenic views at sunset.

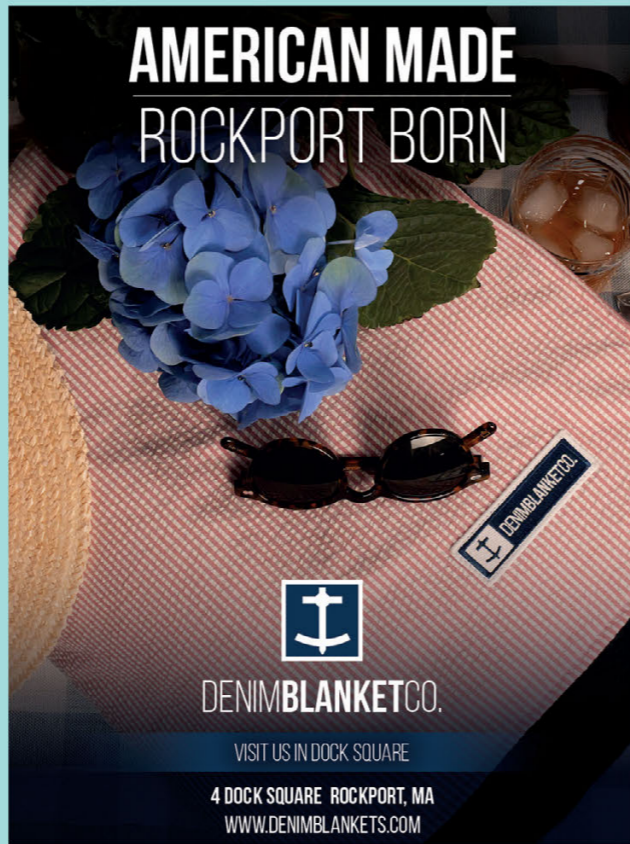


**Rockport**  
VISITOR CENTER  
170 Main Street  
Rockport, MA 01966  
978-546-9372 (seasonal)  
info@capeannchamber.com  
rockportusa.com

**GREATER CAPE ANN**  
CHAMBER OF COMMERCE  
ROCKPORT DIVISION



39 D-Map (See Downtown Map Inside)



©2026 Greater Cape Ann Chamber of Commerce. All rights reserved. No portion of this publication may be reproduced in whole or in part without the express written permission of the Greater Cape Ann Chamber Board of Directors. The Publisher and the Designer, Artfluence, disclaim all responsibility for omissions or errors. Front Cover: ©Jason Kennedy  
f Jason Kennedy Photography @jasonkennedyphoto

A Seaside Village on Cape Ann  
**Rockport**  
VISITOR MAP & GUIDE



## SO CLOSE, YET A WORLD AWAY

Only an hour north of Boston by car or train, and at the heart of the Essex Coastal Scenic Byway, Rockport is the perfect destination for relaxation and inspiration. Full of intriguing history, unmatched beauty and serenity, Rockport invites you to slow down and be renewed.



Rockport Harbor & Motif No.1 (Fishing Shack)

## ARTS & CULTURE

Iconic Motif No. 1 draws artists and art lovers to the picturesque harbor. Rockport's art colony, one of the oldest in America, is home to over 30 galleries and Rockport Art Association & Museum. The Shalin Liu Performance Center, Rockport's world-class live music venue, hosts shows year round. Windhover Center for the Performing Arts presents dance from the stage to the quarries of Cape Ann. Festivals enliven the town in spring, summer and fall, and Christmas in Rockport is celebrated throughout the month of December.



© Shalin Liu Performance Center

Windhover Center for the Performing Arts presents dance from the stage to the quarries of Cape Ann. Festivals enliven the town in spring, summer and fall, and Christmas in Rockport is celebrated throughout the month of December.

## RECREATION

Explore sandy beaches to swim, snorkel, kayak, paddleboard and dive. Visit scenic Halibut Point State Park's Visitor Center and Millbrook Meadow's lovingly restored gardens, ponds and playground. Traverse public footpaths along the sea or throughout historic Dogtown. Trek to granite quarries. Discover the lighthouses of Straitsmouth and Thacher Islands. Watch the most magical sunrises and sunsets.



Halibut Point State Park

**7 Seas Whale Watch**  
A spectacular family adventure!  
GUARANTEED SIGHTINGS SAILING FROM GLOUCESTER, MA  
SINCE 1981  
888-283-1776 7SeasWhaleWatch.com

**The Rockport House**  
stay@therockporthouse.com 978-293-8201 therockporthouse.com

**ROCKPORT SHUTTLE**  
EVERYONE RIDES FREE SUMMER 2026  
cantran.com

**BLANKETS SO COZY**  
Your jeans may get jealous  
DENIMBLANKETCO.

39 D-Map (See Downtown Map Inside)

### 2026 CALENDAR HIGHLIGHTS

\* Dates are subject to change. Scan QR code for event updates:

**MAY**  
16 Motif No. 1 Day

**JUNE**  
12 Rockport Chamber Music Festival (through July 12)  
13 Rockport Farmers Market (every Saturday through October 10)  
23 Music at the Beach (every Monday 6:30 PM through August 24)  
27 Rockport in Bloom Garden Tour "South End Splendors"

**JULY**  
4 Firemen's Parade, Concert & Bonfire  
5 Rockport Legion Band Summer Concert Series (every Sunday 7 PM - 8 PM through August 23)  
11 Rockport Music on the Town (9AM - 8 PM)

**AUGUST**  
8 Rockport Illuminations & Fireworks Display

**SEPTEMBER**  
10-13 Rockport Celtic Festival  
12-27 Trails & Sails: 16 days of fun & exploration throughout Essex County

**OCTOBER**  
3-11 Cape Ann Plein Air (CAPA)  
17 Harvest Fest

**NOVEMBER 28 - DECEMBER 31**  
Christmas in Rockport  
Come experience our seaside village for Christmas in Rockport. Featured events include Santa's Arrival by Lobster Boat, Pictures with Santa, Tree Lighting Ceremony, Sammy the Seagull, Holiday Fairs, Strolling Carolers, Concerts, the annual Live Nativity Pageant, Rockport New Year's Eve and much more. There's something festive happening every weekend!

For year-round event details, visit: [rockportusa.com](http://rockportusa.com)

Seasonal ingredients. Craft cocktails. Warm service.  
**FEATHER & WEDGE**  
RESTAURANT AND BAR  
5 Main Street, Rockport  
978.999.5917  
featherandwedge.com  
@featherandwedge

53 D-Map (See Downtown Map Inside)

**Whales Are Leaping For The Hurricane!**  
The most popular whale watch boat in Greater Boston! The largest and fastest, with the most viewing space!  
48th Season!  
Cape Ann Whale Watch • 1-800-877-5110  
415 Main St. Gloucester • SeeTheWhales.com

**ROCKPORT MUSIC**  
SHALIN LIU PERFORMANCE CENTER  
**GREAT MUSIC. SEASIDE.**  
Classical | Jazz | Folk | World | [rockportmusic.org](http://rockportmusic.org)

10 D-Map (See Downtown Map Inside)

**LOBSTER BOAT TRIPS**  
4 TRIPS PER DAY  
WED, THUR, FRI & SAT  
978-412-2493  
CAPT-JIM.COM

20 D-Map (See Downtown Map Inside)

**Cape Ann Motor Inn**  
Directly on Long Beach  
• All rooms are Ocean view  
• Efficiencies Available  
• Free WiFi  
• Dog friendly  
• All rooms are air conditioned  
• Located on the Gloucester/Rockport town line  
33 Rockport Road, Gloucester  
1-800-464-VIEW | 978-281-2900  
CapeAnnMotorInn.com

25 Map W5 (See Map Inside)

KEY

- G** Gloucester
- E** Essex
- D-Map** Downtown Map
- O** Open Year Round

ARTS & CULTURE / GALLERIES / MUSEUMS

- 1 ART NOOK GALLERY**  
52 Bearskin Neck • 978-491-9821  
art-nook.com • D-Map
- 2 COASTAL LOCALS**  
2 Dock Square • 978-999-5002  
coastal-locals.com • D-Map
- 3 CYNTHIA CURTIS POTTERY**  
80 Pigeon Hill St. • 978-546-6186  
cynthiacurtispottery.com • Map 14
- 4 DREAM HOUSE GALLERY & BOUTIQUE**  
4 Bearskin Neck • 857-523-8424  
dreamhouserockport.com • D-Map
- 5 GALLERY NUMBER ONE**  
1-A Main St. • 508-951-6441  
debsartgallery.com • D-Map
- 6 JAMES BABSON MUSEUM**  
291 Main St. • 978-546-2958  
babsonassoc.org • Map R2
- 7 JOE'S FRESH FISH PRINTS**  
46 Bearskin Neck • 978-944-1709  
fishedimpressions.com • D-Map
- 8 THE PAPER HOUSE**  
52 Pigeon Hill St. • 978-546-2629  
paperhouserockport.com • Map H4
- 9 ROCKPORT ART ASSOCIATION & MUSEUM**  
12 Main St. • 978-546-6604  
Featuring ever-changing exhibitions of fine art for sale and rotating exhibitions from the Museum Collection.  
rockportartassn.org • D-Map
- 10 ROCKPORT MUSIC / SHALIN LIU PERFORMANCE CENTER**  
16 & 37 Main St. • 978-546-7391  
Rockport Music's Shalin Liu Performance Center presents classical, jazz, folk, & pop concerts year-round. • rockportmusic.org  
D-Map • SEE OUR DISPLAY AD
- 11 SANDY BAY HISTORICAL SOCIETY & MUSEUMS**  
40 King St. • 978-546-9533 • rockporthistory.org  
Map M6
- 12 SCOTT TUBBY FINE ART**  
26 Bearskin Neck • 207-329-2586  
scotttubby.com • D-Map
- 13 SQUARE CIRCLE**  
11 Dock Sq. • 978-546-7100 • Paintings by local artists, modern graphics, sculpture, ceramics, Judaica, fused glass. • D-Map
- 14 WINDHOVER CENTER FOR THE PERFORMING ARTS**  
257 Rear Granite St. • 978-546-3611  
Presenting Dance, Theater & Musical Performances rain or shine under outdoor tent, all summer long. • windhover.org  
Map E6

ON THE WATER / RECREATION

- 7 SEAS WHALE WATCH**  
63 Rogers St., 7 Seas Wharf, Gloucester  
978-283-1776 • Yankee Magazine's editors' choice for whale watching in New England. Exciting, fun, educational for all. • 7seaswhalewatch.com  
SEE OUR DISPLAY AD
- 18 NORTH SHORE ADVENTURES & OUTDOOR CENTER**  
9 Tuna Wharf • 978-546-5050 • Come on the ADVENTURE of a lifetime, kayaking, biking, or try our new escape room!!!  
northshoreadventure.com • D-Map
- 19 ROCKPORT GOLF CLUB**  
36 Country Club Rd. • 978-546-3340  
Nine-hole semi-private golf course. Open Apr.-Nov. • rockportgolfclub.com  
Map P10
- 20 ROCKPORT SEAVENTURE**  
11 Tuna Wharf • 978-412-2493  
capt-jim.com • D-Map  
SEE OUR DISPLAY AD
- ESSEX RIVER CRUISES & CHARTERS**  
35 Dodge St., Essex Marina, Essex • 978-768-6981  
essexcruises.com

HEAD OUT ON A SEA EXCURSION, GO BIKING, GOLF, OR TRY AN ESCAPE ROOM

ACCOMMODATIONS

- 24 ADDISON CHOATE** • 49 Broadway  
978-546-7543 • Newly renovated boutique hotel, en suite marble bathrooms, stylish décor, flat screen TVs, A/C, walk to town/ beach. • addisonchoate.com  
D-Map • SEE OUR DISPLAY AD
- 25 CAPE ANN MOTOR INN**  
33 Rockport Rd. (at Long Beach)  
978-281-2900 • capeannmotorinn.com  
Map W5 • SEE OUR DISPLAY AD
- 26 CAPTAIN'S BOUNTY ON THE BEACH** • 1 Beach St. • 978-546-9557  
captainsbountyhotel.com • D-Map
- 27 THE COVE AT ROCKPORT**  
1 King St. • 978-203-2840 • Year round, coastal boutique hotel with serene views, outdoor lounge, & modern amenities. • coveatrockport.com  
D-Map
- 28 THE EMERSON INN**  
1 Cathedral Ave. • 978-546-6321  
theemersoninn.com • Map G7
- 29 LANTANA HOUSE B&B**  
22 Broadway • 978-546-3535  
An intimate B&B in the heart of Rockport. Easy walk to shops, restaurants, and beach.  
thelantanahouse.com • D-Map
- 30 LIGHTHOUSE LANE COTTAGES** • 5 Lighthouse Ln.  
978-546-1643 • lighthouselanecottage.com  
Map N11
- 31 ROCKPORT INN & SUITES**  
183 Main St. • 978-546-3300  
rockportinnandsuites.com • Map O5
- 32 SALLY WEBSTER COLLECTION**  
34 Mount Pleasant St. • 978-309-8159  
A beautifully renovated boutique inn offering a stylish take on an antique colonial home. • sallywebster.com  
Map N8
- 33 THE ROCKPORT HOUSE**  
17 Pleasant St. • 978-293-8201 • therockporthouse.com • Map O8  
SEE OUR DISPLAY AD
- 34 YANKEE CLIPPER INN**  
127 Granite St. • 978-546-0001  
1929 Art Deco panoramic oceanfront inn. Patios, balconies, A/C and full hot breakfast inclusive. Outdoor pool.  
yankeeclipperinn.com • Map I7

STAY & PLAY-ENJOY A NORTH SHORE GETAWAY

Visit NORTH BOSTON northofboston.org

This brochure was made possible by a grant administered by the North of Boston Convention and Visitors Bureau.



24 D-Map

**ADDISON CHOATE**  
A Boutique Hotel

**COASTAL LUXURY REIMAGINED**  
Experience the Beauty and Charm of Rockport

49 D-Map

**Fleur Cuisine**  
HARBORSIDE

Delicious Food. Local Ingredients. Bold Flavors.

American & Caribbean flavors, executed with Fleur Cuisine's original twist and creativity.

1 T-WHARF IN ROCKPORT | (978) 309-5199  
FLEURCUISINEHARBORSIDE.COM

MAP KEY

- I** Information
- P** Parking
- R** Restroom
- W** Water Bottle Refill
- T** MBTA Train Stop
- CC** MBTA Commuter Rail
- CB** CATA Bus Stop
- EV** EV Charging Station
- PS** Police Station
- TH** Town Hall
- PO** Post Office
- ATM** ATM
- PL** Public Library
- Beach** Beach
- GC** Golf Course
- WT** Water Tour
- L** Lighthouse
- SV** Scenic Vista
- MA** Museum/Arts Venue
- ES** Essex Coastal Scenic Byway
- CD** Cultural District

VISIT YEAR ROUND

See our website for upcoming events:  
**rockportusa.com**

SHOPS

- FIND LOCAL TREASURES**
- 38 CEDAR CHEST ROCKPORT**  
60 Bearskin Neck • 978-879-9223  
cedarchestrockport.com • D-Map
  - 39 DENIM BLANKET CO.**  
4 Dock Square • 978-999-5016  
American-made blankets and goods, crafted for comfort, quality, coastal style, & timeless New England living. • denimblankets.com • D-Map  
SEE OUR DISPLAY AD
  - 40 FLOATING LOTUS**  
27 Bearskin Neck • 978-546-2367  
floatinglotus.net • D-Map
  - 41 SHELL RKPT** • 9 Bearskin Neck  
978-525-8001 • shellrkpt.com • D-Map
  - 42 SUSIESSTORIES ROCKPORT**  
51 Bearskin Neck • 978-491-8012  
A bookstore for the entire family. Board books to best sellers. Orders & deliveries available. • susiestories-107442.square.site • D-Map
  - 43 SANDY BAY PROVISIONS**  
27 Whistlestop Mall • 978-546-1616  
Beer, wine, groceries & more. A modern general store • Find us on Facebook • Map N5
  - 44 TUCK'S CANDY & GIFTS**  
15 Main St. • 978-546-6352  
Find us on Facebook • D-Map

FOOD & DINING

- 48 DELISI'S RED SKIFF**  
15 Mount Pleasant St. • 978-546-7647  
Find us on Facebook • D-Map
- 49 FLEUR CUISINE HARBORSIDE**  
1 T-Wharf • 978-309-5199 • Experience culinary delight year-round at Fleur Cuisine Harborside, where fresh flavors meet stunning waterfront views!  
fleurcuisineharborside.com • D-Map  
SEE OUR DISPLAY AD
- 50 THE LOBSTER ROLLER KITCHEN** • 2 Dock Sq. • 978-290-2370  
thelobsterroller.com • D-Map
- 51 HEATH'S TEA ROOM**  
43 South St. • 978-309-3388 • heathstearoom.com • Map O 10
- 52 ROCKPORT BREWING COMPANY** • 17 Railroad Ave. • rockportbrewingcompany.com  
Map N5
- 53 FEATHER & WEDGE**  
5 Main St. • 978-999-5917 • At land's edge, seasonal New England cuisine, genuine hospitality, and craft define every experience. • featherandwedge.com  
D-Map • SEE OUR DISPLAY AD
- 54 THE LOBSTER POOL**  
329 Granite St. • 978-546-7808  
thelobsterpool.com • Map D4

DINE WITH US

SERVICES

- ENJOY LOCAL SERVICES THAT MAKE YOUR VISIT FEEL LIKE HOME
- 55 CAPE ANN TRANSPORTATION AUTHORITY (CATA)** • 3 Pond Rd., Gloucester • 978-283-7916 • Provider of public transportation for over 45 years on Cape Ann • cantran.com  
SEE OUR DISPLAY AD
  - 56 CAPE ANN SAVINGS BANK - GRANITE BRANCH** • 247 Main St. • 978-546-7185 • Drive-through ATM & teller window; 24-hour Rockport Market & Whistlestop Mall ATMs.  
capeannsavings.bank • Map Q3
  - 57 FIRST BAPTIST CHURCH OF ROCKPORT** • 4 High St. • 978-546-6121 • firstbaptistrockport.org  
D-Map

MA MASSACHUSETTS visitma.com

Funded, in part, by the Massachusetts Office of Travel & Tourism